

# Chaotic Convection and Multifractal Turbulence

**Wiesław M. Macek**<sup>(1,2)</sup>

(1) Faculty of Mathematics and Natural Sciences, Cardinal Stefan Wyszyński University, Wóycickiego 1/3, 01-938 Warsaw, Poland;

(2) Space Research Centre, Polish Academy of Sciences, Bartycka 18 A, 00-716 Warsaw, Poland  
e-mail: [macek@cbk.waw.pl](mailto:macek@cbk.waw.pl), <http://www.cbk.waw.pl/~macek>



# Objective

The aim of the course is to give students an introduction to the new developments in nonlinear dynamics and fractals. Emphasis will be on the basic concepts of nonlinearity, fractals, multifractals, chaos, and strange attractors based on intuition rather than mathematical proofs. The specific exercises will also include applications to convection in a viscous fluid and intermittent turbulence in various environments. On successful completion of this course, students should understand and apply the fractal models to real systems and be able to evaluate the importance of multifractality with possible applications to physics, astrophysics and space physics, chemistry, biology, and even economy.

# Plan of the Course

## 1. Lorenz System

- Rayleigh-Bénard Convection in a Viscous Fluid
- Basic Equations and Approximations
- Lorenz Model
- A Generalized Lorenz Model for a Magnetized Fluid
- New Strange Attractors

## 2. Intermittency

- Bifurcations and Intermittency
- Basic Types of Intermittency

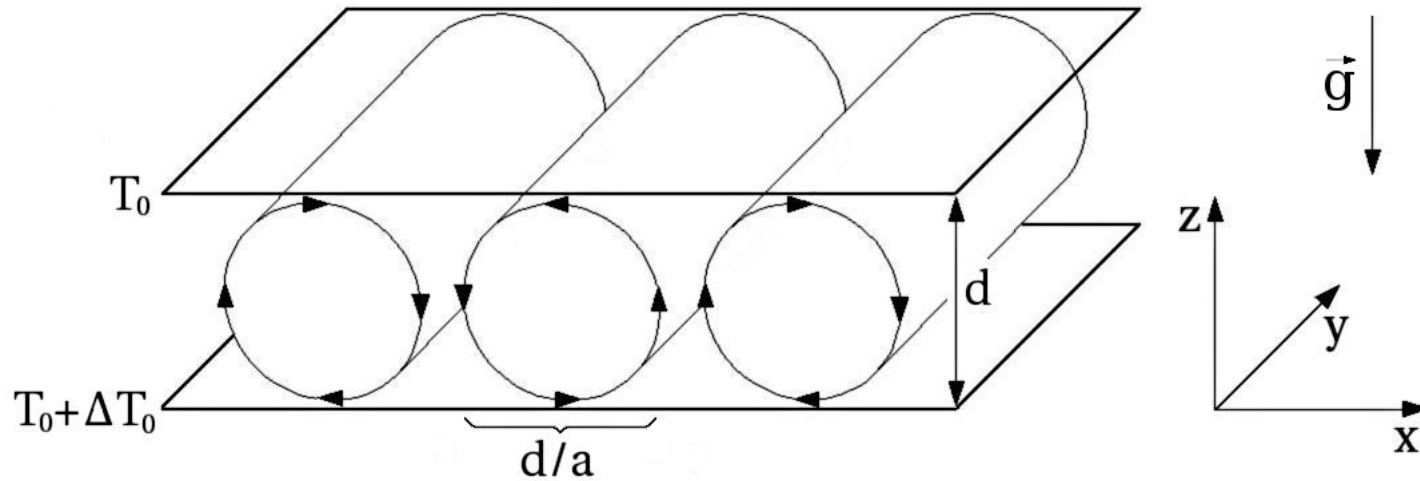
## 3. Multifractals

- Intermittent Turbulence
- Weighted Two-Scale Cantors Set
- Multifractals Analysis of Turbulence

## 4. Applications and Conclusions

- Importance of Being Nonlinear
- Importance of Multifractality

# Rayleigh-Bénard Convection



Navier-Stokes equation

$$\frac{d\mathbf{v}}{dt} = -\frac{1}{\rho} \nabla p + \nu \Delta \mathbf{v} + \mathbf{g},$$

Heat conduction equation

$$\frac{dT}{dt} = \kappa \Delta T,$$

Continuity equation

$$\nabla \cdot \mathbf{v} = 0.$$

# Rayleigh-Bénard Convection

$$\rho \frac{d\mathbf{v}}{dt} = -\nabla p + \nu \rho \Delta \mathbf{v} + \rho \mathbf{f}, \quad \frac{dT}{dt} = \kappa \Delta T, \quad \nabla \cdot \mathbf{v} = 0 \quad (\nabla \times \dots)$$

time and space changes:  $\frac{d}{dt} \equiv \frac{\partial}{\partial t} + \mathbf{v} \cdot \nabla$  for incompressible fluid

Oberbeck-Boussinesq approximation:

$\rho = \rho_o$  except for  $\rho = \rho_o(1 - \beta \delta T)$  in the buoyancy term  $\rho \mathbf{g}$  ( $\mathbf{f} = \mathbf{g}$ ,  $z$ -axis)

$$\mathbf{v} = \nabla \times \boldsymbol{\Psi} \quad \boldsymbol{\Psi} = \{0, \boldsymbol{\Psi}(x, z, t), 0\}$$

$$T(x, z, t) = T(x, 0, t) + \delta T_0 - \frac{\delta T_0}{d} z + \boldsymbol{\theta}(x, z, t)$$

Bispectral representation:

$$\frac{a}{\kappa(1+a^2)} \boldsymbol{\Psi}(x, z, t) = X(t) \sqrt{2} \sin\left(\frac{\pi a}{d} x\right) \sin\left(\frac{\pi}{d} z\right)$$

$$\frac{\pi R_a}{R_c \delta T_0} \boldsymbol{\theta}(x, z, t) = Y(t) \sqrt{2} \cos\left(\frac{\pi a}{d} x\right) \sin\left(\frac{\pi}{d} z\right) - Z(t) \sin\left(\frac{2\pi}{d} z\right)$$

# Deterministic Nonperiodic Flow<sup>1</sup>

EDWARD N. LORENZ

*Massachusetts Institute of Technology*

(Manuscript received 18 November 1962, in revised form 7 January 1963)

## ABSTRACT

Finite systems of deterministic ordinary nonlinear differential equations may be designed to represent forced dissipative hydrodynamic flow. Solutions of these equations can be identified with trajectories in phase space. For those systems with bounded solutions, it is found that nonperiodic solutions are ordinarily unstable with respect to small modifications, so that slightly differing initial states can evolve into considerably different states. Systems with bounded solutions are shown to possess bounded numerical solutions.

A simple system representing cellular convection is solved numerically. All of the solutions are found to be unstable, and almost all of them are nonperiodic.

The feasibility of very-long-range weather prediction is examined in the light of these results.

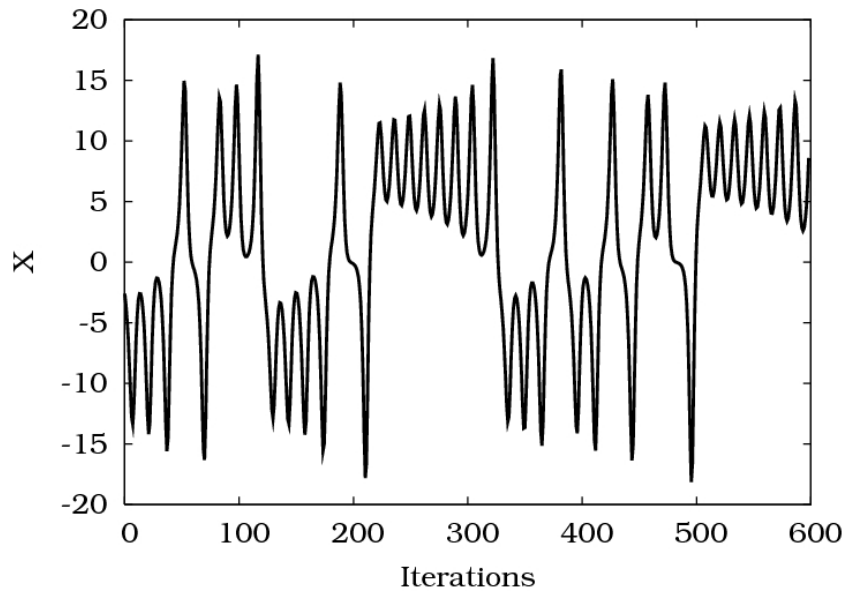
# Lorenz Model

$$\begin{aligned}\dot{X} &= \sigma(Y - X) \\ \dot{Y} &= -XZ + rX - Y \\ \dot{Z} &= XY - bZ\end{aligned}$$

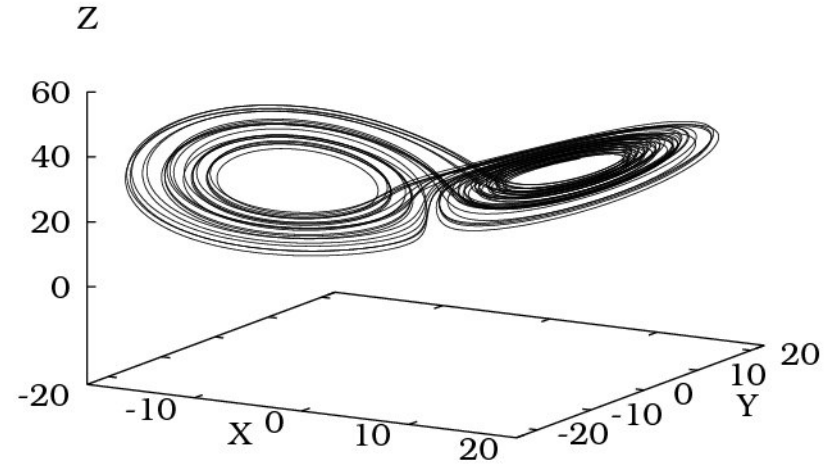
Parameters:

$$r = 28, \sigma = 10, b = 8/3$$

Time series for  $X$

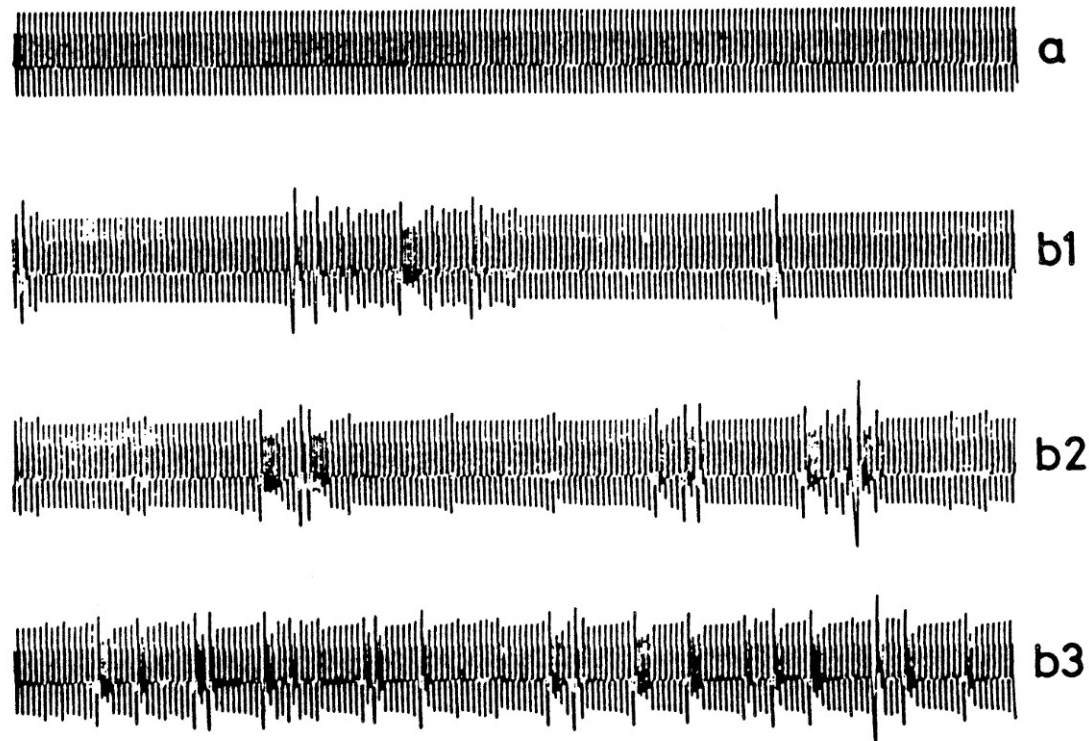


Attractor



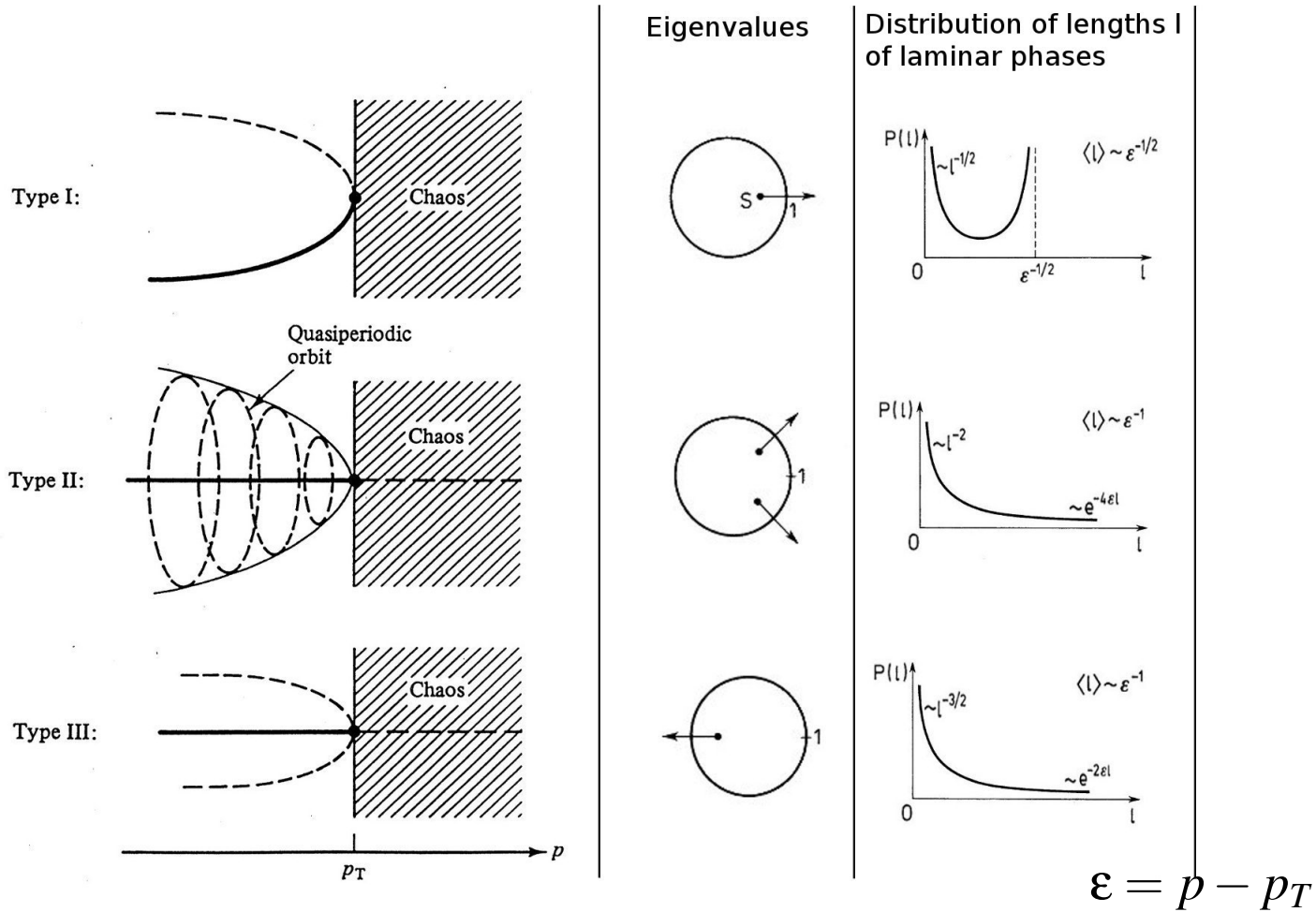
# Intermittency

In dynamical systems theory: occurrence of a signal that alternates randomly between long periods of regular behavior and relatively short irregular bursts. In other words, motion in intermittent dynamical system is nearly periodic with occasional irregular bursts.



Pomeau & Manneville, 1980

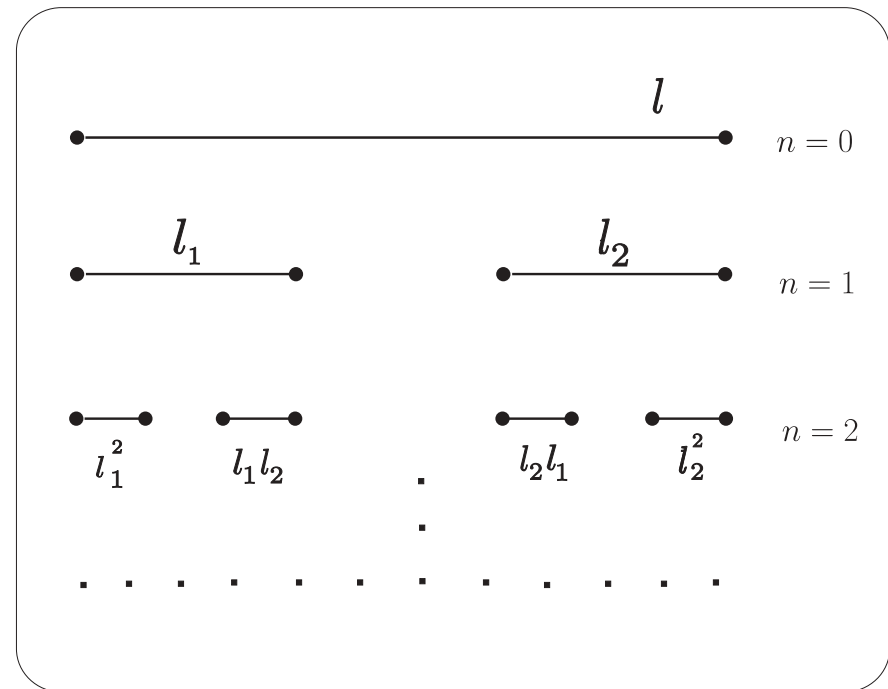
# Basic Types of Intermittency



# Fractals and Multifractals

A **fractal** is a rough or fragmented geometrical object that can be subdivided in parts, each of which is (at least approximately) a reduced-size copy of the whole. Fractals are generally *self-similar* and independent of scale (fractal dimension).

A **multifractal** is a set of intertwined fractals. Self-similarity of multifractals is scale dependent (spectrum of dimensions). A deviation from a strict self-similarity is also called **intermittency**.



Two-scale **Cantor set**.

## Fractal

A measure (volume)  $V$  of a set as a function of size  $l$

$$V(l) \sim l^{D_F}$$

The number of elements of size  $l$  needed to cover the set

$$N(l) \sim l^{-D_F}$$

The fractal dimension

$$D_F = \lim_{l \rightarrow 0} \frac{\ln N(l)}{\ln 1/l}$$

## Multifractal

A (probability) measure versus singularity strength,  $\alpha$

$$p_i(l) \propto l^{\alpha_i}$$

The number of elements in a small range from  $\alpha$  to  $\alpha + d\alpha$

$$N_l(\alpha) \sim l^{-f(\alpha)}$$

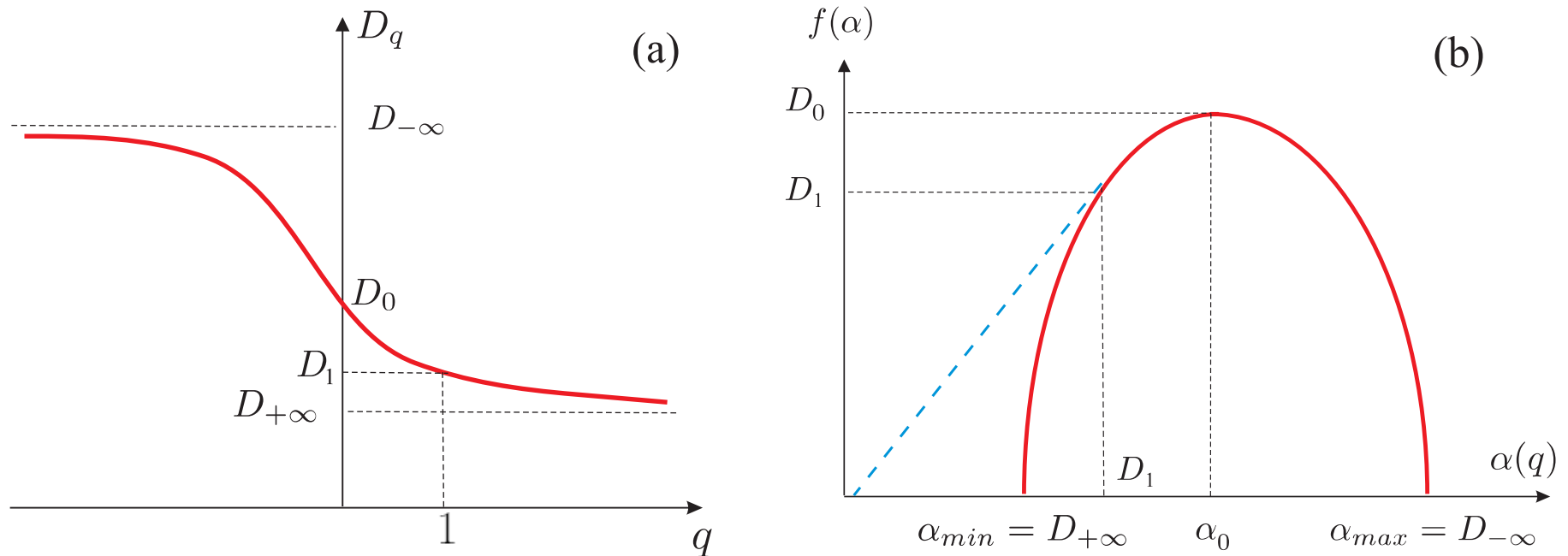
The multifractal singularity spectrum

$$f(\alpha) = \lim_{\varepsilon \rightarrow 0} \lim_{l \rightarrow 0} \frac{\ln[N_l(\alpha + \varepsilon) - N_l(\alpha - \varepsilon)]}{\ln 1/l}$$

The generalized dimension

$$D_q = \frac{1}{q-1} \lim_{l \rightarrow 0} \frac{\ln \sum_{k=1}^N (p_k)^q}{\ln l}$$

# Multifractal Characteristics



**Fig. 1.** (a) The generalized dimensions  $D_q$  as a function of any real  $q$ ,  $-\infty < q < \infty$ , and (b) the singularity multifractal spectrum  $f(\alpha)$  versus the singularity strength  $\alpha$  with some general properties: (1) the maximum value of  $f(\alpha)$  is  $D_0$ ; (2)  $f(D_1) = D_1$ ; and (3) the line joining the origin to the point on the  $f(\alpha)$  curve where  $\alpha = D_1$  is tangent to the curve (Ott *et al.*, 1994).

## Generalized Scaling Property

The generalized dimensions are important characteristics of *complex* dynamical systems; they quantify multifractality of a given system (Ott, 1993).

Using ( $\sum p_i^q \equiv \langle p_i^{q-1} \rangle_{\text{av}}$ ) a generalized average probability measure of cascading eddies

$$\bar{\mu}(q, l) \equiv \sqrt[q-1]{\langle (p_i)^{q-1} \rangle_{\text{av}}} \quad (1)$$

we can identify  $D_q$  as scaling of the measure with size  $l$

$$\bar{\mu}(q, l) \propto l^{D_q} \quad (2)$$

Hence, the slopes of the logarithm of  $\bar{\mu}(q, l)$  of Eq. (2) versus  $\log l$  (normalized) provides

$$D_q = \lim_{l \rightarrow 0} \frac{\log \bar{\mu}(q, l)}{\log l} \quad (3)$$

## Measures and Multifractality

Similarly, we define a one-parameter  $q$  family of (normalized) generalized pseudoprobability measures (Chhabra and Jensen, 1989; Chhabra *et al.*, 1989)

$$\mu_i(q, l) \equiv \frac{p_i^q(l)}{\sum_{i=1}^N p_i^q(l)} \quad (4)$$

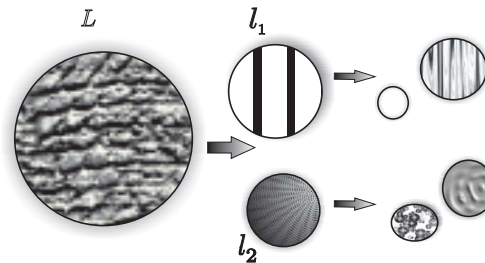
Now, with an associated fractal dimension index  $f_i(q, l) \equiv \log \mu_i(q, l) / \log l$  for a given  $q$  the multifractal spectrum of dimensions is defined directly as the averages taken with respect to the measure  $\mu(q, l)$  in Eq. (4) denoted by  $\langle \dots \rangle$

$$f(q) \equiv \lim_{l \rightarrow 0} \sum_{i=1}^N \mu_i(q, l) f_i(q, l) = \lim_{l \rightarrow 0} \frac{\langle \log \mu_i(q, l) \rangle}{\log(l)} \quad (5)$$

and the corresponding average value of the singularity strength is given by (Chhabra and Jensen, 1987)

$$\alpha(q) \equiv \lim_{l \rightarrow 0} \sum_{i=1}^N \mu_i(q, l) \alpha_i(l) = \lim_{l \rightarrow 0} \frac{\langle \log p_i(l) \rangle}{\log(l)}. \quad (6)$$

# Turbulence Cascade



**Fig. 1.** Schematics of binomial multiplicative processes of cascading eddies. A large eddy of size  $L$  is divided into two smaller *not necessarily equal* pieces of size  $l_1$  and  $l_2$ . Both pieces may have different probability measures, as indicated by the different shading. At the  $n$ -th stage we have  $2^n$  various eddies. The processes continue until the Kolmogorov scale is reached (Meneveau and Sreenivasan, 1991; Macek *et al.*, 2009).

In the case of turbulence cascade these generalized measures are related to inhomogeneity with which the energy is distributed between different eddies (Meneveau and Sreenivasan, 1991). In this way they provide information about dynamics of multiplicative process of cascading eddies. Here high positive values of  $q > 1$  emphasize regions of intense fluctuations larger than the average, while negative values of  $q$  accentuate fluctuations lower than the average (cf. Burlaga 1995).

# Methods of Data Analysis

## Structure Functions Scaling

In the inertial range ( $\eta \ll l \ll L$ ) the averaged standard  $q$ th order ( $q > 0$ ) structure function is scaling with a scaling exponent  $\xi(q)$  as

$$S_u^q(l) = \langle |u(x+l) - u(x)|^q \rangle_{\text{av}} \propto l^{\xi(q)} \quad (7)$$

where  $u(x)$  and  $u(x+l)$  are velocity components parallel to the longitudinal direction separated from a position  $x$  by a distance  $l$ .

The existence of an inertial range for the experimental data is discussed by Horbury *et al.* (1997), Carbone (1994), and Szczepaniak and Macek (2008).

## Energy Transfer Rate and Probability Measures

$$\varepsilon(x, l) \sim \frac{|u(x+l) - u(x)|^3}{l}, \quad (8)$$

To each  $i$ th eddy of size  $l$  in turbulence cascade ( $i = 1, \dots, N = 2^n$ ) we associate a probability measure

$$p(x_i, l) \equiv \frac{\varepsilon(x_i, l)}{\sum_{i=1}^N \varepsilon(x_i, l)} = p_i(l). \quad (9)$$

This quantity can roughly be interpreted as a probability that the energy is transferred to an eddy of size  $l = v_{sw}t$ .

As usual the time-lags can be interpreted as longitudinal separations,  $x = v_{sw}t$  (Taylor's hypothesis).

## Magnetic Field Strength Fluctuations and Generalized Measures

Given the normalized time series  $B(t_i)$ , where  $i = 1, \dots, N = 2^n$ , to each interval of scale  $l = v_{sw}\tau$ , we associate a measure  $\mu(t_i, \tau)$  calculated by using the average values  $\langle B(t_i, \tau) \rangle$  of  $B(t_i)$  between  $t_i$  and  $t_i + \tau$ , as discussed by Burlaga (1995)

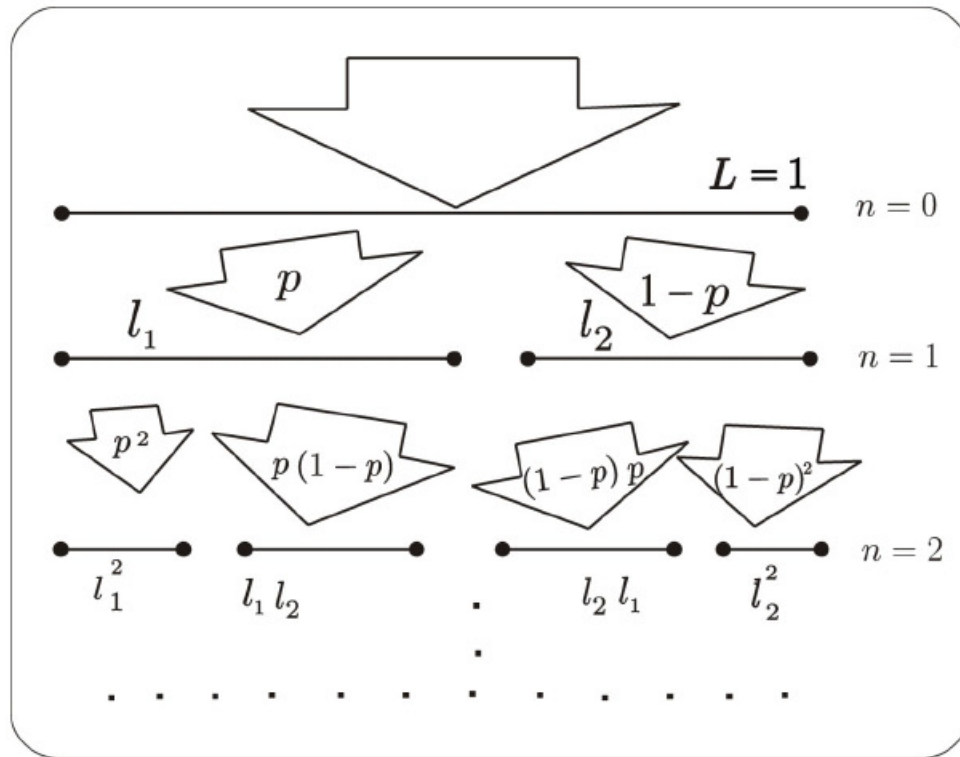
$$\mu(t_i, \tau) = \langle B(t_i, \tau) \rangle \frac{\tau}{N} = \mu_i(\tau). \quad (10)$$

This quantity can be interpreted as a probability that at time  $t_i$  the magnetic flux is transferred to a segment of a temporal size  $\tau$ .

Therefore, given a time series  $B(t)$  it can be argued that in some region the average value of its  $q$  th moment at various times scales  $\tau$  should scale with the exponent  $s(q) = (q - 1)(D_q - 1)$  as (Burlaga, 1995)

$$\langle B^q(t, \tau) \rangle \sim \tau^{s(q)}. \quad (11)$$

# Mutifractal Models for Turbulence



$$p_1 + p_2 = 1$$

**Two-scale model**

$$l_1 + l_2 \leq 1, \quad l_1 \neq l_2$$

**One-scale model**

$$l_1 = l_2 = s \leq 1$$

**P-model**

$$l_1 = l_2 = \frac{1}{2}$$

$$\Gamma_n^q(p_1, p_2, l_1, l_2) = \left( \frac{p_1^q}{l_1^{(q-1)D_q}} + \frac{p_2^q}{l_2^{(q-1)D_q}} \right)^n = 1$$

**Fig. 1.** Generalized two-scale Cantor set model for turbulence (Macek, 2007).

# Degree of Multifractality and Asymmetry

The difference of the maximum and minimum dimension (the least dense and most dense points in the phase space) is given, e.g., by Macek (2006, 2007)

$$\Delta \equiv \alpha_{\max} - \alpha_{\min} = D_{-\infty} - D_{\infty} = \left| \frac{\log(1-p)}{\log l_2} - \frac{\log(p)}{\log l_1} \right|. \quad (12)$$

In the limit  $p \rightarrow 0$  this difference rises to infinity (degree of multifractality).

The degree of multifractality  $\Delta$  is simply related to the deviation from a simple self-similarity. That is why  $\Delta$  is also a measure of intermittency, which is in contrast to self-similarity (Frisch, 1995, chapter 8).

Using the value of the strength of singularity  $\alpha_0$  at which the singularity spectrum has its maximum  $f(\alpha_0) = 1$  we define a measure of asymmetry by

$$A \equiv \frac{\alpha_0 - \alpha_{\min}}{\alpha_{\max} - \alpha_0}. \quad (13)$$

# Importance of Multifractality

The concept of multiscale multifractality is of great importance for space plasmas because it allows us to look at intermittent turbulence in the solar wind (e.g., Marsch and Tu, 1997; Bruno *et al.*, 2001). Starting from seminal works of Kolmogorov (1941) and Kraichnan (1965) many authors have attempted to recover the observed scaling exponents, using multifractal phenomenological models of turbulence describing distribution of the energy flux between cascading eddies at various scales (Meneveau and Sreenivasan, 1987, Carbone, 1993, Frisch, 1995).

In particular, the multifractal spectrum has been investigated using Voyager (magnetic field fluctuations) data in the outer heliosphere (e.g., Burlaga, 1991, 1995, 2001) and using Helios (plasma) data in the inner heliosphere (e.g., Marsch *et al.*, 1996; Macek and Szczepaniak, 2008). We have also analysed the multifractal spectrum directly on the solar wind attractor and have shown that it is consistent with that for the multifractal measure of a two-scale weighted Cantor set (Macek, 2007).

The multifractal scaling has also been tested using Ulysses observations (Horbury *et al.*, 1997) and with Advanced Composition Explorer (ACE) and WIND data (e.g., Hnat *et al.*, 2003; Kiyani *et al.*, 2007; Wawrzaszek and Macek, 2010).

# Our Multifractal Model of Turbulence

- To quantify scaling of solar wind turbulence, we have developed a generalized weighted two-scale Cantor set model using the partition technique (Szczepaniak and Macek, 2008).
- We have studied the inhomogeneous rate of the transfer of the energy flux indicating multifractal and intermittent behaviour of solar wind turbulence in the inner and outer heliosphere using fluctuations of the velocity of the flow of the solar wind at small scales. We have investigated the resulting spectrum of generalized dimensions and the corresponding multifractal singularity spectrum depending on one probability measure parameter and two rescaling parameters. (Macek and Szczepaniak, 2008; Macek and Wawrzaszek, 2009)

- We have further examined the question of scaling properties of intermittent fluctuations of the magnetic field embedded in the solar wind on both small and large scales using our weighted two-scale Cantor set model in comparison with the simple one scale multifractal spectrum (Szczepaniak and Macek, 2008).
- In particular, we have shown that the degree of multifractality for fluctuations of the interplanetary magnetic field strengths at small scales is smaller than that at the large scales. Moreover, we demonstrate that the multifractal spectrum is asymmetric for small scale fluctuations, in contrast to the rather symmetric spectrum observed on large scales. It is worth noting that for the multifractal two-scale Cantor set model a good agreement with the data is obtained. Hence we propose this new model as a useful tool for analysis of intermittent fluctuations of the interplanetary magnetic field strength on both small and large scales (Macek and Wawrzaszek, 2010).

# Observation of the Multifractal Spectrum at the Frontiers of the Solar System

- In addition, the times series of the magnetic field strengths measured in situ by Voyager 1 spacecraft to very large distances from the Sun and even in the heliosheath have already been analysed. It is known that fluctuations of the solar magnetic fields at large scales from 2 to 16 (32) days may exhibit multifractal scaling laws (Burlaga, 2004).
- In 2004 at distances of 85 AU from the Sun Voyager 1 crossed the termination heliospheric shock separating the Solar System plasma from the surrounding heliosheath, and entered the subsonic solar wind, where it has encountered quite unusual conditions. The magnetic fields in the heliosheath are normally distributed in contrast to the lognormal distribution in the outer heliosphere (Burlaga, 2005). It also appears that the magnetic field in the inner heliosheath, at  $\sim 95$  AU, has a multifractal structure on large scales from  $\sim 2$  to 16 days (Burlaga *et al.*, 2006).

- We also have examined the question of scaling properties of intermittent solar wind turbulence on large scales using our weighted two-scale Cantor set model. We compare the Burlaga's (2004) fit to the multifractal spectrum with the two-scale model at the heliospheric boundary (Macek and Wawrzaszek, 2009).
- We have shown that the degree of multifractality for fluctuations of the interplanetary magnetic field strength before shock crossing is greater than that in the heliosheath. Moreover, we have demonstrated that the multifractal spectrum is asymmetric before shock crossing, in contrast to the symmetric spectrum observed in the heliosheath; the solar wind in the outer heliosphere may exhibit strong asymmetric scaling (Macek and Wawrzaszek, 2010a).

# Conclusions

- We see that a low-dimensional nonlinear Lorenz model describes self-consistently convective transport in viscous fluids. Nonperiodic oscillations are unstable resulting in exponential sensitivity to initial conditions
- At the boundary between chaotic and periodic region in control parameters space intermittent behavior is possible. One should note that, as is essential for intermittency, this transition from regular to irregular behavior results from the appearance and disappearance of fixed points or limit cycles and not from any stochastic forces.
- Within the complex dynamics of the fluctuating intermittent parameters of turbulent media there is a detectable, hidden order described by a generalized Cantor set that exhibits a multifractal structure.

- W. M. Macek, Multifractality and intermittency in the solar wind, *Nonlin. Processes Geophys.* **14**, 695–700 (2007).
- W. M. Macek and A. Szczepaniak, Generalized two-scale weighted Cantor set model for solar wind turbulence, *Geophys. Res. Lett.*, **35**, L02108 (2008).
- A. Szczepaniak and W. M. Macek, Asymmetric multifractal model for solar wind intermittent turbulence, *Nonlin. Processes Geophys.*, **15**, 615–620 (2008).
- W. M. Macek and A. Wawrzaszek, Evolution of asymmetric multifractal scaling of solar wind turbulence in the outer heliosphere, *J. Geophys. Res.*, **114**, A03108 (2009).
- W. M. Macek, Chaos and multifractals in the solar Wind, *Adv. Space Res.*, 46, 526–531 (2010).
- W. M. Macek, A. Wawrzaszek, T. Hada, Multiscale Multifractal Intermittent Turbulence in Space Plasmas, *J. Plasma Fusion Res. Series*, vol. 8, 142-147 (2009).
- W. M. Macek, Chaos and Multifractals in the Solar System Plasma, in *Topics on Chaotic Systems*, edited by C. H. Skiadas et al., Selected Papers from Chaos 2008 International Conference, World Scientific, New Jersey, pp. 214-223 (2009).
- W. M. Macek and A. Wawrzaszek, Multifractal Turbulence at the Termination Shock, *Solar Wind 12*, American Institute of Physics, vol. CP1216 (2010a), p. 572–575.
- H. Lamy, A. Wawrzaszek, W. M. Macek, T. Chang, New Multifractal Analyses of the Solar Wind Turbulence: Rank-Ordered Multifractal Analysis and Generalized Two-scale Weighted Cantor Set Model, *Solar Wind 12*, American Institute of Physics, vol. CP1216 (2010b), p. 124–127.
- A. Wawrzaszek and W. M. Macek, Observation of multifractal spectrum in solar wind turbulence by Ulysses at high latitudes, *J. Geophys. Res.*, 115, A07104 (2010).
- W. M. Macek and A. Wawrzaszek, Multifractal structure of small and large scales fluctuations of interplanetary magnetic fields, *Planet. Space Sci.*, 2805 (2011), in press.